



Test Report

Report No.: TS20170317

Applicant	Mid Ocean Brands B.V.
Address	Unit 201 2/F., Laford Centre, 838 Lai Chi Kok Road, Cheung Sha Wan, Kowloon, Hong Kong
Report Date	2017-04-18

Hangzhou C&K Testing Technic Co., Ltd.

Hangzhou C&K Testing Technic Co., Ltd

Add : 1/F, No. 4 Building, Huaye Hi-Tech Industrial Park, No. 1180, Bin'an Road, Binjiang District, Hangzhou 310052, China.

Hotline : 4006-721-723 Lab Tel : +86 571-8720 6535 Fax : +86 571-8990 0719 E-mail : test@circs-group.com Website : www.circs-ck.com

The result(s) shown in this report refer only to the sample(s) tested unless otherwise stated. This report shall not be reproduced except in full, without written prior approval of Hangzhou C&K Testing Technic Co., Ltd.



Test Report

Applicant	Mid Ocean Brands B.V.
Address	Unit 201 2/F., Laford Centre, 838 Lai Chi Kok Road, Cheung Sha Wan, Kowloon, Hong Kong
Sample Name	UMBRELLA
Type/ Model	MO8776, MO8777, MO8584, MO8775
Sample Received Date	2017-04-11
Test Period	2017-04-11~ 2017-04-17
Test Requirement	To determine the following items in the submitted sample(s) according to the client's requirement.

Test Item(s)	Test Result(s)
Lead Content	See Test Result(s)
Cadmium Content	See Test Result(s)
Azo Dyes Content	See Test Result(s)

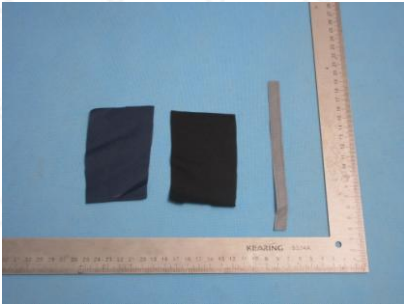
Complied by Beta Inspected by Kals Zhang Authorized by Li Changhai



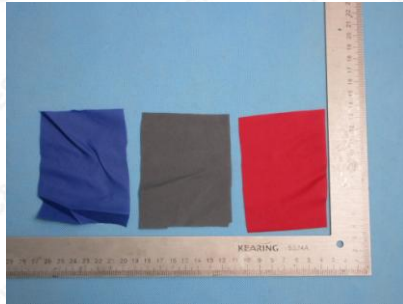
Test Component(s):

No.	Sample Serial No.	Test Component(s)
001	TS20170317001	UMBRELLA-FABRIC (Navy blue+Black) + Silver tape
002	TS20170317002	UMBRELLA-FABRIC (Gray+Red+Royal blue)

Photo(s):



TS20170317001 (Mixed)



TS20170317002 (Mixed)



MO8584



MO8775



MO8776



MO8777



Lead Content

Test Methods: EPA 3052:1996, EPA 6010D:2014

Test Item(s)	MDL	Unit	Test Result(s)	
			001	002
Lead (Pb)	5	mg/kg	N.D.	N.D.

Remarks:

1. N.D. = Not detected (<MDL); MDL= Method Detection Limits.

Cadmium Content

Test Methods: EN 1122:2001

Test Item(s)	MDL	Unit	Test Result(s)	
			001	002
Cadmium (Cd)	5	mg/kg	N.D.	N.D.

Remarks:

1. N.D. = Not detected (<MDL); MDL= Method Detection Limits.



Azo Dyes Content

Test Method: EN 14362-1: 2012, EN 14362-3: 2012, Analysis was performed by GC-MS

No.	Test Item(s)	CAS No.	MDL	Unit	Test Result(s)
					001
1	4-aminobiphenyl xenylamine	92-67-1	5	mg/kg	N.D.
2	Benzidine	92-87-5	5	mg/kg	N.D.
3	4-chloro-o-toluidine	95-69-2	5	mg/kg	N.D.
4	2-naphthylamine	91-59-8	5	mg/kg	N.D.
5	O-aminoazotoluene	97-56-3	5	mg/kg	N.D.
6	5-nitro-o-toluidine	99-55-8	5	mg/kg	N.D.
7	4-chloroaniline	106-47-8	5	mg/kg	N.D.
8	4-methoxy-m-phenylenedia mine	615-05-4	5	mg/kg	N.D.
9	4,4'-methylenedianiline	101-77-9	5	mg/kg	N.D.
10	3,3'-dichlorobenzidine	91-94-1	5	mg/kg	N.D.
11	3,3'-dimethoxybenzidine	119-90-4	5	mg/kg	N.D.
12	3,3'-dimethylbenzidine	119-93-7	5	mg/kg	N.D.
13	4,4'-methylenedi-o-toluidine	838-88-0	5	mg/kg	N.D.
14	6-methoxy-m-toluidine (p-cresidine)	120-71-8	5	mg/kg	N.D.
15	4,4'-methylene-bis-(2-chloro- aniline)	101-14-4	5	mg/kg	N.D.
16	4,4'-oxydianilin	101-80-4	5	mg/kg	N.D.
17	4,4'-thiodianiline	139-65-1	5	mg/kg	N.D.
18	o-toluidine	95-53-4	5	mg/kg	N.D.
19	4-methyl-m-phenylenedia mine (toluene-2,4-diamine)	95-80-7	5	mg/kg	N.D.
20	2,4,5-trimethylaniline	137-17-7	5	mg/kg	N.D.
21	4-Aminoazobenzene	60-09-3	5	mg/kg	N.D.
22	o-anisidine	90-04-0	5	mg/kg	N.D.

Remarks:

1. N.D. = Not detected (<MDL); MDL= Method Detection Limits.



Azo Dyes Content

Test Method: EN 14362-1: 2012, Analysis was performed by GC-MS

No.	Test Item(s)	CAS No.	MDL	Unit	Test Result(s)
					002
1	4-aminobiphenyl xenylamine	92-67-1	5	mg/kg	N.D.
2	Benzidine	92-87-5	5	mg/kg	N.D.
3	4-chloro-o-toluidine	95-69-2	5	mg/kg	N.D.
4	2-naphthylamine	91-59-8	5	mg/kg	N.D.
5	O-aminoazotoluene	97-56-3	5	mg/kg	N.D.
6	5-nitro-o-toluidine	99-55-8	5	mg/kg	N.D.
7	4-chloroaniline	106-47-8	5	mg/kg	N.D.
8	4-methoxy-m-phenylenedia mine	615-05-4	5	mg/kg	N.D.
9	4,4'-methylenedianiline	101-77-9	5	mg/kg	N.D.
10	3,3'-dichlorobenzidine	91-94-1	5	mg/kg	N.D.
11	3,3'-dimethoxybenzidine	119-90-4	5	mg/kg	N.D.
12	3,3'-dimethylbenzidine	119-93-7	5	mg/kg	N.D.
13	4,4'-methylenedi-o-toluidine	838-88-0	5	mg/kg	N.D.
14	6-methoxy-m-toluidine (p-cresidine)	120-71-8	5	mg/kg	N.D.
15	4,4'-methylene-bis-(2-chloro- aniline)	101-14-4	5	mg/kg	N.D.
16	4,4'-oxydianilin	101-80-4	5	mg/kg	N.D.
17	4,4'-thiodianiline	139-65-1	5	mg/kg	N.D.
18	o-toluidine	95-53-4	5	mg/kg	N.D.
19	4-methyl-m-phenylenedia mine (toluene-2,4-diamine)	95-80-7	5	mg/kg	N.D.
20	2,4,5-trimethylaniline	137-17-7	5	mg/kg	N.D.
21	4-Aminoazobenzene	60-09-3	5	mg/kg	N.D.
22	o-anisidine	90-04-0	5	mg/kg	N.D.

Remarks:

1. N.D. = Not detected (<MDL); MDL= Method Detection Limits.

The end of report