



# Test Report

Report No.: TS20170538

|             |  |
|-------------|--|
| Applicant   | Mid Ocean Brands B.V.  |
| Address     | Unit 201 2/F., Laford Centre, 838 Lai Chi Kok Road, Cheung Sha Wan, Kowloon, Hong Kong |
| Report Date | 2017-04-25   |

**Hangzhou C&K Testing Technic Co., Ltd.**

Hangzhou C&K Testing Technic Co., Ltd

Add : 1/F, No. 4 Building, Huaye Hi-Tech Industrial Park, No. 1180, Bin'an Road, Binjiang District, Hangzhou 310052, China.

Hotline : 4006-721-723 Lab Tel : +86 571-8720 6535 Fax : +86 571-8990 0719 E-mail : test@circs-group.com Website : www.cirs-ck.com

The result(s) shown in this report refer only to the sample(s) tested unless otherwise stated. This report shall not be reproduced except in full, without written prior approval of Hangzhou C&K Testing Technic Co., Ltd.



## Test Report

|                             |  |
|-----------------------------|--|
| <b>Applicant</b>            | Mid Ocean Brands B.V.  |
| <b>Address</b>              | Unit 201 2/F., Laford Centre, 838 Lai Chi Kok Road, Cheung Sha Wan, Kowloon, Hong Kong             |
| <b>Sample Name</b>          | UMBRELLA   |
| <b>Type/ Model</b>          | MO8779   |
| <b>Sample Received Date</b> | 2017-04-18   |
| <b>Test Period</b>          | 2017-04-18~ 2017-04-25   |
| <b>Test Requirement</b>     | To determine the following items in the submitted sample(s) according to the client's requirement. |

| Test Item(s)     | Test Result(s)     |
|------------------|--------------------|
| Lead Content     | See Test Result(s) |
| Cadmium Content  | See Test Result(s) |
| Azo Dyes Content | See Test Result(s) |

Complied by Crystal Su Inspected by Kale Zhang Authorized by Li Changhai



**Test Component(s):**

| No. | Sample Serial No. | Test Component(s)                                       |
|-----|-------------------|---|
| 001 | TS20170538001     | Umbrella fabric-Black                                   |
| 002 | TS20170538002     | Umbrella fabric -Navy blue                              |
| 003 | TS20170538003     | Umbrella fabric -Gray                                   |
| 004 | TS20170538004     | Umbrella fabric -White                                  |
| 005 | TS20170538005     | Umbrella fabric-Royal blue                              |
| 006 | TS20170538006     | Umbrella fabric (Black+Navy blue+Gray+White+Royal blue) |

**Photo(s):**



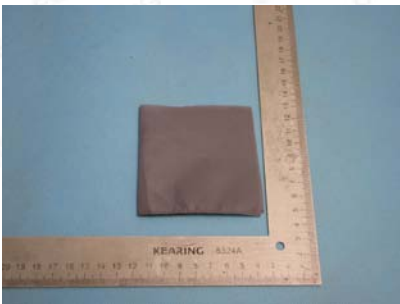
MO8779



TS20170538001



TS20170538002



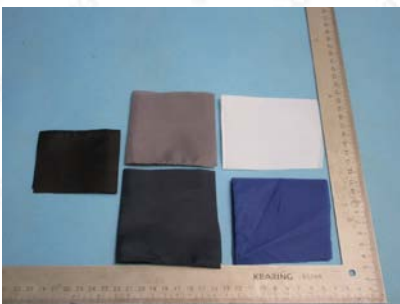
TS20170538003



TS20170538004



TS20170538005



TS20170538006 (Mixed)



### Lead Content

Test Methods: EPA 3052:1996, EPA 6010D:2014

| Test Item(s) | MDL | Unit  | Test Result(s) |      |      |      |      |
|--------------|-----|-------|----------------|------|------|------|------|
|              |     |       | 001            | 002  | 003  | 004  | 005  |
| Lead (Pb)    | 5   | mg/kg | N.D.           | N.D. | N.D. | N.D. | N.D. |

Remarks:

1. N.D. = Not detected (<MDL); MDL= Method Detection Limits.

### Cadmium Content

Test Methods: EN 1122:2001

| Test Item(s) | MDL | Unit  | Test Result(s) |      |      |      |      |
|--------------|-----|-------|----------------|------|------|------|------|
|              |     |       | 001            | 002  | 003  | 004  | 005  |
| Cadmium (Cd) | 5   | mg/kg | N.D.           | N.D. | N.D. | N.D. | N.D. |

Remarks:

1. N.D. = Not detected (<MDL); MDL= Method Detection Limits.



### Azo Dyes Content

Test Method: EN 14362-1: 2012, EN 14362-3: 2012, Analysis was performed by GC-MS

| No. | Test Item(s)  | CAS No.  | MDL | Unit  | Test Result(s) |
|-----|---|----------|-----|-------|----------------|
|     |   |          |     |       | 006            |
| 1   | 4-aminobiphenyl xenylamine                            | 92-67-1  | 5   | mg/kg | N.D.           |
| 2   | Benzidine   | 92-87-5  | 5   | mg/kg | N.D.           |
| 3   | 4-chloro-o-toluidine                                  | 95-69-2  | 5   | mg/kg | N.D.           |
| 4   | 2-naphthylamine                                       | 91-59-8  | 5   | mg/kg | N.D.           |
| 5   | O-aminoazotoluene                                     | 97-56-3  | 5   | mg/kg | N.D.           |
| 6   | 5-nitro-o-toluidine                                   | 99-55-8  | 5   | mg/kg | N.D.           |
| 7   | 4-chloroaniline                                       | 106-47-8 | 5   | mg/kg | N.D.           |
| 8   | 4-methoxy-m-phenylenedia<br>mine                      | 615-05-4 | 5   | mg/kg | N.D.           |
| 9   | 4,4'-methylenedianiline                               | 101-77-9 | 5   | mg/kg | N.D.           |
| 10  | 3,3'-dichlorobenzidine                                | 91-94-1  | 5   | mg/kg | N.D.           |
| 11  | 3,3'-dimethoxybenzidine                               | 119-90-4 | 5   | mg/kg | N.D.           |
| 12  | 3,3'-dimethylbenzidine                                | 119-93-7 | 5   | mg/kg | N.D.           |
| 13  | 4,4'-methylenedi-o-toluidine                          | 838-88-0 | 5   | mg/kg | N.D.           |
| 14  | 6-methoxy-m-toluidine<br>(p-cresidine)                | 120-71-8 | 5   | mg/kg | N.D.           |
| 15  | 4,4'-methylene-bis-(2-chloro-<br>aniline)             | 101-14-4 | 5   | mg/kg | N.D.           |
| 16  | 4,4'-oxydianilin                                      | 101-80-4 | 5   | mg/kg | N.D.           |
| 17  | 4,4'-thiodianiline                                    | 139-65-1 | 5   | mg/kg | N.D.           |
| 18  | o-toluidine   | 95-53-4  | 5   | mg/kg | N.D.           |
| 19  | 4-methyl-m-phenylenedia<br>mine (toluene-2,4-diamine) | 95-80-7  | 5   | mg/kg | N.D.           |
| 20  | 2,4,5-trimethylaniline                                | 137-17-7 | 5   | mg/kg | N.D.           |
| 21  | 4-Aminoazobenzene                                     | 60-09-3  | 5   | mg/kg | N.D.           |
| 22  | o-anisidine   | 90-04-0  | 5   | mg/kg | N.D.           |

Remarks:

1. N.D. = Not detected (<MDL); MDL= Method Detection Limits.

\*\*\*The end of report\*\*\*